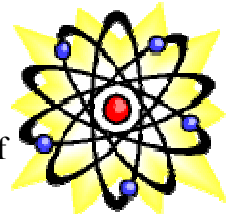
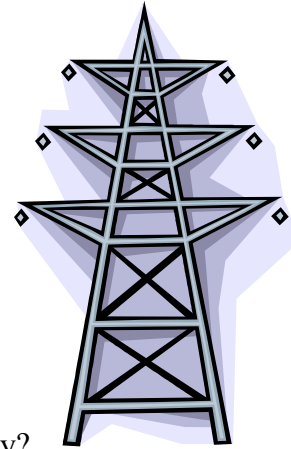


ENERGY!



Here's a quiz to test your energy knowledge.

- Most of the energy we use originally came from
 - [the sun](#)
 - [the air](#)
 - [the soil](#)
 - [the oceans](#)
- Electrical energy can be produced from
 - [mechanical energy](#)
 - [chemical energy](#)
 - [radiant energy](#)
 - [All of the above](#)
- Which uses the most energy in American homes each year?
 - [lighting](#)
 - [water heating](#)
 - [heating and cooling rooms](#)
 - [refrigeration](#)
- The U.S. consumes lots of energy. Which fuel provides the most energy?
 - [petroleum](#)
 - [coal](#)
 - [natural gas](#)
 - [solar](#)
- Coal, petroleum, natural gas, and propane are fossil fuels. They are called fossil fuels because:
 - [they are burned](#) to release energy and they cause air pollution
 - [they were formed from the buried remains of plants and tiny animals](#) that lived hundred of millions of years ago
 - [they are nonrenewable](#) and will run out
 - [they are mixed with fossils](#) to provide energy
- Gasoline is produced by refining which fossil fuel?
 - [natural gas](#)
 - [coal](#)
 - [petroleum](#)
 - [propane](#)
- Propane is used instead of natural gas on many farms and in rural areas. Why is propane often used instead of natural gas?
 - [it's safer](#)
 - [it's portable](#)
 - [it's cleaner](#)
 - [it's cheaper](#)
- What sector of the U.S. economy consumes most of the nation's petroleum?
 - [residential](#)
 - [commercial](#)
 - [industrial](#)
 - [transportation](#)
- Natural gas is transported mainly by
 - [pipelines](#)
 - [trucks](#)
 - [barges](#)
 - [all three equally](#)
- Global warming focuses on an increase in the level of which gas in the atmosphere?
 - [ozone](#)
 - [sulfur dioxide](#)
 - [carbon dioxide](#)
 - [nitrous oxide](#)
- Solar, biomass, geothermal, wind, and hydropower energy are all renewable sources of energy. They are called renewable because they
 - [are clean and free to use](#)
 - [can be converted directly into heat and electricity](#)
 - [can be replenished by nature in a short period of time](#)
 - [do not produce air pollution](#)
- Today, which renewable energy source provides the U.S. with the most energy?
 - [wind](#)
 - [solar](#)
 - [geothermal](#)
 - [hydropower](#)
- Electricity is the movement of
 - [atoms](#)
 - [molecules](#)
 - [electrical power](#)
 - [neutrons](#)
- How much of the energy in burning coal reaches the consumer as electricity?
 - [1/3](#) (one-third)
 - [1/2](#) (one-half)
 - [3/4](#) (three-quarters)
 - [9/10](#) (nine-tenths)
- In a nuclear power plant, uranium atoms
 - [combine and give off heat energy](#)
 - [split and give off heat energy](#)
 - [burn and give off heat energy](#)
 - [split and give off electrons](#)

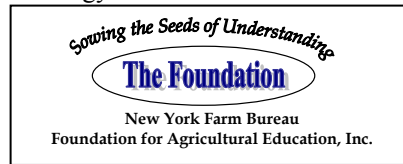


ENERGY!

Thanks to the Department of Energy for creation of this material which was downloaded from their website.

Energy Information Administration, EI30
1000 Independence Avenue SW
Washington, DC 20585

Official Energy Statistics from the US Government



1-800-342-4143

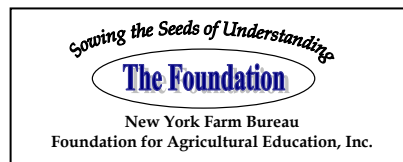


Energy Quiz Answers

- 1) **A** - The energy in [biomass](#), [wind](#), [solar energy](#), and [fossil fuels](#) originally came from the sun.
- 2) **D** - [Electrical energy](#) can be produced from all three: mechanical energy, chemical energy, and radiant energy.
- 3) **C** - [Heating and cooling rooms](#) consumes the most energy in the American home each year.
- 4) **A** - [Petroleum](#) gives the U.S. most of its energy?
- 5) **B** - They are formed from the [buried remains of plants and tiny animals](#) that lived hundreds of millions of years ago, long before the first dinosaur walked the earth.
- 6) **C** - [Petroleum](#).
- 7) **B** - [It's portable](#).
- 8) **D** - [The transportation sector](#) consumes most of the nation's petroleum.
- 9) **A** - [Pipelines](#) transport most of the natural gas.
- 10) **C** - [Carbon dioxide](#) given off by burning fossil fuels is focused on as a contributor to global warming.
- 11) **C** - [Renewable fuels](#) can be replenished by nature in a short period of time.
- 12) **D** - [Hydropower](#) provides more energy than any other renewable fuel source.
- 13) **C** - [Electrical power](#) or electric charge moves to provide electricity.
- 14) **A** - [33% efficiency rating](#).
- 15) **B** - [Uranium atoms split and give off heat energy](#).

Thanks to the Department of Energy for creation of this material which was downloaded from their website.

Official Energy Statistics from the US Government



1-800-342-4143